

Wireless Wire Cube

A 2 Gb/s 60 GHz aggregate link with a 5 GHz failover.
Forget about wires or downtime!

Best price/performance on the market, stealthy and sturdy design.



800
m

Reach distance
up to 800m



60 GHz with automatic
5 GHz backup connection



Compact and
durable



iOS/Android app for quick
and easy configuration



Gigabit Ethernet
with PoE-in

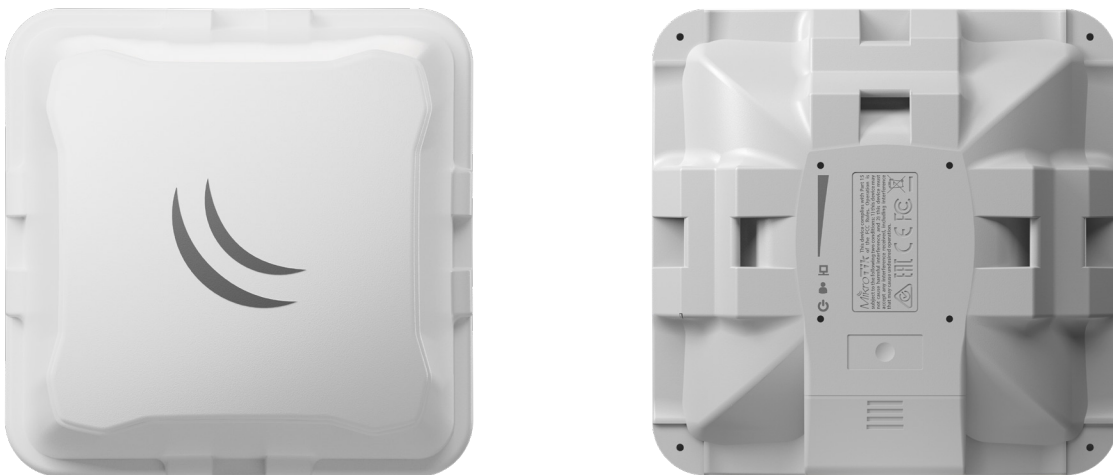


Powerful
quad-core CPU

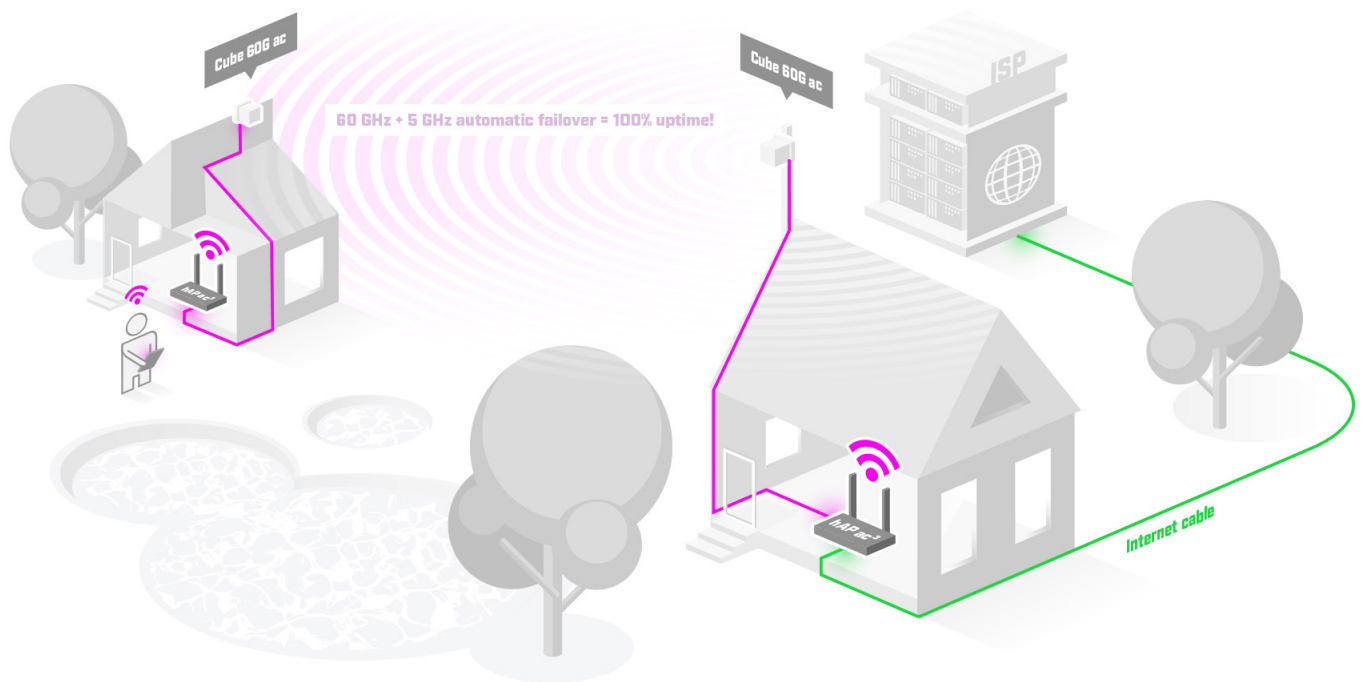
If you are managing networks in a large, busy area (like a park or a stadium), then you have probably experienced all kinds of problems – massive interference, signal loss during bad weather, etc. And laying wires everywhere can be clumsy and expensive, sometimes even impossible. Finally, there is a simple, secure and extremely cost-effective solution: **the Wireless Wire Cube.**

/ It is a kit of two pre-paired devices that form a blazing fast AES encrypted wireless connection. Pure plug-and-play: just point the Cubes at one another and power them on!

The 60 GHz frequency is unaffected by the crowded wireless spectrum, it offers high speed and capacity. Traditional 60 GHz devices, however, can have limited connectivity during bad weather. But not the **Wireless Wire Cube!** It features an automatic 5 GHz backup connection, so you don't have to worry about any downtime. **No need for additional configuration - the 5 GHz backup connection works out-of-the-box! The Cube will take care of your connection at all times.**



It can easily cover a distance of 800 meters and reach fiber-like speed. The Cube form-factor has been designed with function and durability in mind. And it attracts less unwanted attention due to its size and shape. The box includes two Cube 60G ac devices that are already paired together, power supplies, PoE injectors and mounting kits for both devices.



Specifications

Product code	CubeG-5ac60adpair
CPU	4 core IPQ-4019 716 MHz
Size of RAM	256 MB
Storage	16 MB flash
Number of 1G Ethernet ports	1
Wireless	5 GHz 802.11a/n/ac
Wireless Chains	1
Ingress protection class	IP 54
WiGig chipset	QCA6335
WiGig antenna module	WLQ14QDKR00
Supported protocol	802.11ad
Max EIRP (dBm)	40
Dimensions	130 x 130 x 132 mm
Operating temperature	-40°C to +70°
Operating system	RouterOS, License level 3

Certification & Approvals

Certification	CE, FCC, IC
---------------	-------------

Powering

PoE-in	802.3af/at
Supported input voltage	12-57 V
Power adapter nominal voltage	24 V
Power adapter nominal current	0.8 A
Max power consumption	9 W

Wireless specifications

Rate (5 GHz)	Tx (dBm)	Rx (dBm)
6MBit/s	22	-93
54MBit/s	18	-74
MCS0	22	-93
MCS7	17	-71
MCS9	15	-68

Included parts



24 V 0.8 A
power adapter



Cube mount



PoE injector



K-70 fastening set