

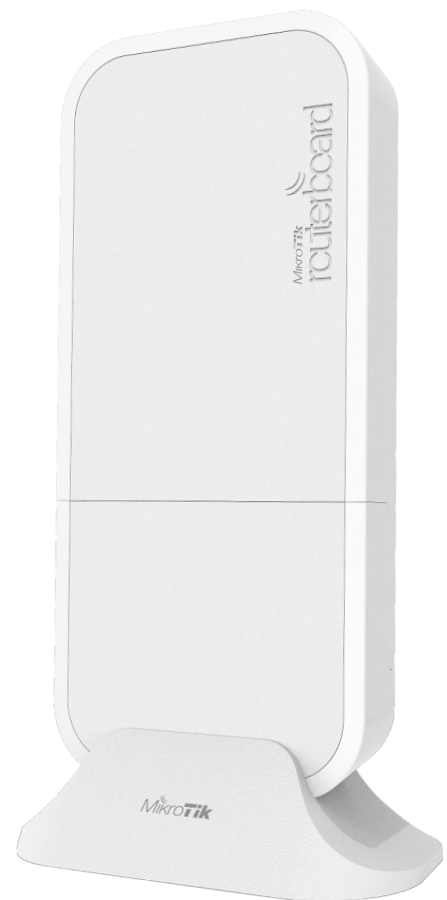
wAP ac LTE

The wAP ac LTE is a powerful dual-band wireless AP with LTE backup and two Gigabit Ethernet ports, available in several versions.

Based on the popular wAP form factor, the device is weatherproof and ready for outdoor and indoor installations. You can mount it on walls, ceilings, poles or stand it on a flat surface.

The device is powered by a four core 716 MHz CPU and 128 MB RAM, capable of handling heavy loads. It's equipped with two Gigabit Ethernet ports, dual-chain 2.4 GHz and dual-chain 5 GHz wireless for dual concurrent AP coverage. It has a DC power jack, and supports 10-57 V power input by Passive POE or 802.3af/at.

For the easier use unit is now equipped with a Micro SIM slot.



Three models are available:

- wAP ac LTE kit (RBwAPGR-5HacD2HnD&R11e-LTE) with R11e-LTE modem for International bands 1, 2, 3, 7, 8, 20, 38 and 40.
- wAP ac 4G kit (RBwAPGR-5HacD2HnD&R11e-4G) with R11e-4G modem for International / USA bands 3, 7, 20, 31, 41n, 42 and 43.
- wAP R ac (RBwAPGR-5HacD2HnD) without LTE card.

Specifications

Product code	RBwAPGR-5HacD2HnD	RBwAPGR-5Hac-D2HnD&R11e-LTE	RBwAPGR-5Hac-D2HnD&R11e-4G
CPU	Quad-core IPQ-4018 716 MHz		
Size of RAM	128 MB		
Storage	16 MB flash		
10/100/1000 Ethernet ports	2		
Wireless	2.4 GHz 802.11b/g/n dual-chain, 5 GHz 802.11a/n/ac dual-chain		
Wireless regulations	Specific frequency range will be limited by country regulations		
Wireless antenna max gain	2.5 dBi		
LTE antenna max gain	4 dBi (with u.FL connector)		
Antenna beam width	360°		
LTE category	-	4 (150 Mbps Downlink, 50 Mbps Uplink)	
3G category	-	R7 (21 Mbps Downlinks, 5.76 Mbps Uplink)	-
2G category	-	Class12	-
Micro SIM slot	1		
Supported input voltage	DC jack 10 - 57 V		
PoE in	Passive PoE 18-57V or active 802.3af/at		
Dimensions	185 x 85 x 30 mm		
Operating temperature	-30°C .. +60°C		
Operating system	RouterOS, License level 4		
MiniPCIe slots	1		
Max Power consumption	11 W	14 W	

Supported bands

RBwAPGR-5HacD2HnD&R11e-LTE

LTE (FDD) bands	1(2100)/2(1900)/3(1800)/7(2600)/8(900)/20(800)
LTE (TDD) bands	38(2600)/40(2300)
3G bands	1(2100)/2(1900)/5(850)/8(900)
2G bands	2(1900)/3(1800)/5(850)/8(900)

Supported bands

RBwAPGR-5HacD2HnD&R11e-4G

LTE (FDD) bands	3/7/20/31 (1800/2600/800/450)
LTE (TDD) bands	41n/42/43 (2500/3500/3700)

Wireless specifications

Rate (2.4 GHz)	Tx (dBm)	Rx (dBm)	Rate (5 GHz)	Tx (dBm)	Rx (dBm)
1MBit/s	22	-100	6MBit/s	24	-96
11MBit/s	22	-94	54MBit/s	20	-80
6MBit/s	23	-95	MCS0	24	-96
54MBit/s	19	-78	MCS7	19	-75
MCS0	23	-95	MCS9	17	-70
MCS7	18	-73			

Included parts



24 V 0.8 A power adapter



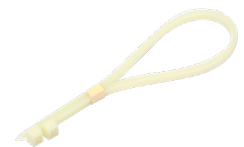
Fastening set



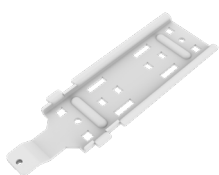
Desktop stand



Metal ring



Plastic straps



Ceiling mount bracket



Gigabit PoE injector



wAP mount



Locking set