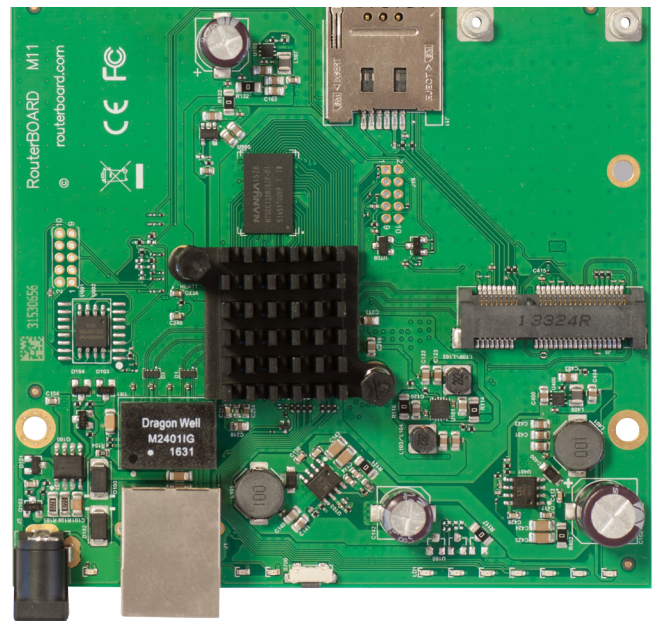


## M11G

The M11 is a fully featured RouterBOARD device perfect for using with your own enclosure or building a custom solution. It uses the same square PCB and mounting holes as its predecessors, you can simply swap out the older models with the brand new M11.

The M11 features a new MediaTek dual core CPU running at 880MHz, a miniPCIe slot for using with a WiFi module of your choice, or with a 3G/LTE modem (SIM slot provided). The device can be powered by PoE through its gigabit ethernet connector or through the DC power jack.



## Specifications

Product code	RBM11G
CPU	MediaTek MT7621
CPU nominal frequency	880 MHz
CPU core count	2
Size of RAM	256 MB
Storage	Flash, 16 MB
10/100/1000 Ethernet ports	1
MiniPCIe slots	1
SIM card slots	1
PoE in	Yes
Supported input voltage	10 V - 30 V (Passive PoE and 802.3af/at with unshielded cable)
Dimensions	105 x 110 mm
Operating temperature	-40°C .. +70°C tested
License level	4
Operating System	RouterOS
Max Power consumption	11 W