

# SXT HG5 ac

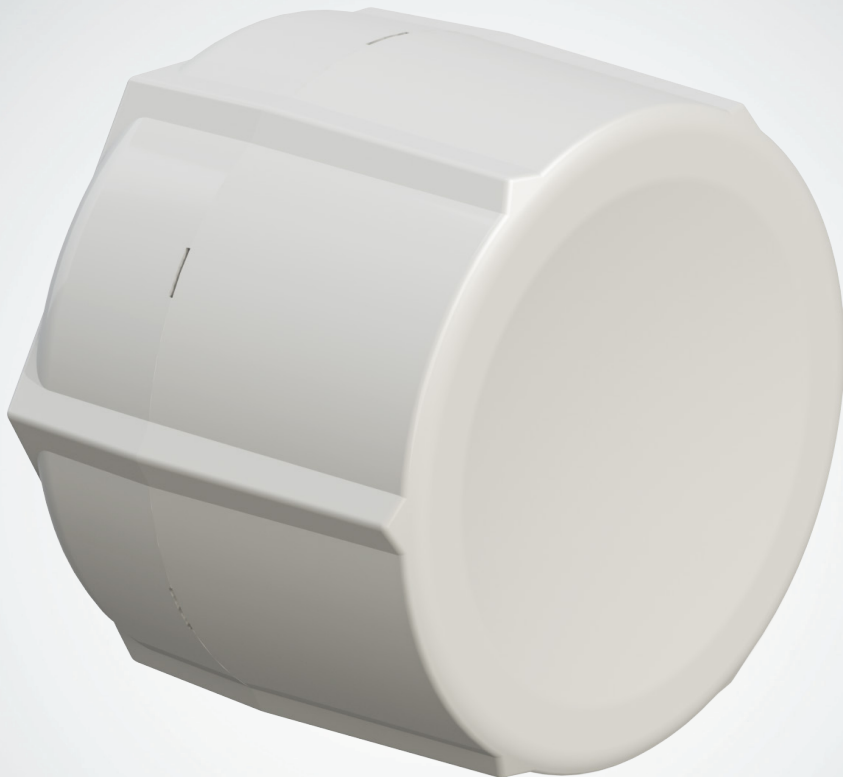
The new High Gain version of our popular SXT G 802.11ac model, equipped with an improved 5GHz 17dBi 24 degree antenna, Gigabit Ethernet port and RouterOS L4 license.

Like all our SXT units, this is a neat and compact outdoor device that comes with all necessary accessories included. Use it as a wireless AP, for point to point, or as a CPE unit. 802.11ac technology provides data rates up to 866Mbit, but is also backwards compatible with 802.11a/n.

The SXT HG supports 10-57V 802.3af/at and passive PoE power input.

|                  |   |
|------------------|---|
| CPU              | QCA9557 720MHz CPU  |
| Memory           | 128MB DDR2 RAM  |
| Ethernet         | 1x 10/100/1000 Mbit/s Gigabit Ethernet with Auto-MDI/X  |
| Wireless cards   | Onboard dual chain 5GHz 802.11ac QCA9882 wireless module; 10kV ESD protection on each RF port   |
| Extras           | Reset switch, beeper, USB 2.0 port, voltage and temperature monitors  |
| LEDs             | Power LED, Ethernet LED, 5 wireless signal LED  |
| Power input      | PoE in: 10-57V 802.3af/at and passive PoE<br>Packaged with 24V DC 0.8A power adapter and passive Gigabit PoE injector                     |
| Dimensions       | 140x140x105mm. Weight without packaging, adapters and cables: 265g  |
| Max consumption  | 12W at 24V  |
| Operating Temp   | -30C .. +80C  |
| OS               | MikroTik RouterOS, Level4 license (AP support)  |
| Package contains | SXT wireless device with integrated antenna, pole mounting bracket, mounting ring, Gigabit PoE injector, power adapter, quick setup guide |

|                 |   |
|-----------------|---|
| TX/RX at MSC9   | 22dBm / -72dBm  |
| TX/RX at MCS0   | 30dBm / -96dBm  |
| TX/RX at MCS7   | 27dBm / -77dBm  |
| TX/RX at 6Mbit  | 31dBm / -96dBm  |
| TX/RX at 54Mbit | 28dBm / -81dBm  |
| Antenna         | Dual pol. 24deg, 5GHz antenna, 17dBi gain, -30db port to port isolation |



Metal ring



Gigabit PoE injector



Power adapter



Pole mounting bracket