

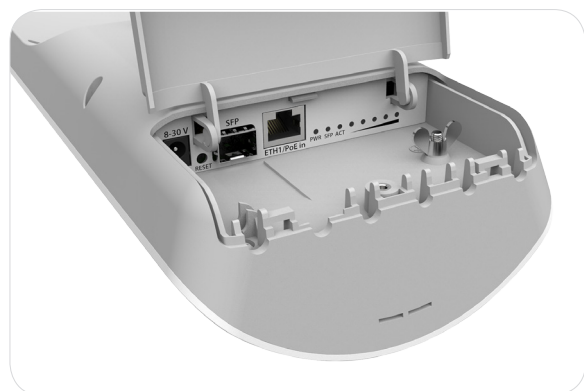
mANTBox series

The mANTBox is based on our new mANT sector antennas, but also has a wireless router built right in. Powered by the RB921 device, the mANTBox comes ready to use with everything included. The device uses a high speed 720MHz CPU and has a built in 802.11 ac/a/n wireless device with up to 31dBm output power.

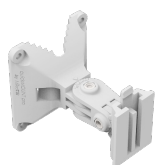
Just like our mANT antennas, the mANTBox also comes in two sizes, a 15 degree sector unit and a 19 degree sector unit.



The mANTBox15s is compatible with the SXT type mount, so you can use it with our durable and adjustable QuickMount systems. It comes with quickMOUNT PRO included. The mANTBox19s comes with metallic U bolt type mounts.



24V 0.8A Power adapter



quickMOUNT PRO



K-41 screw kit



Metal ring

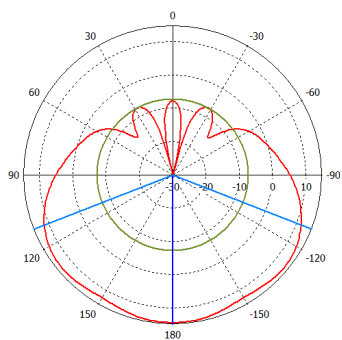
Specifications

Product code	RB921GS-5HPacD-15S	RB921GS-5HPacD-19S
CPU	Single core QCA9557 720 MHz	Single core QCA9557 720 MHz
Size of RAM	128 MB DDR2 300Mhz	128 MB DDR2 300Mhz
Data storage	128 MB NAND	128 MB NAND
10/100/1000 Ethernet ports	1	1
SFP cage	1	1
Wireless	Built-in 5 GHz 802.11ac, dual-chain	Built-in 5 GHz 802.11ac, dual-chain
Wireless chip model	QCA9882	QCA9882
PCB temperature monitor	Yes	Yes
Voltage monitor	Yes	Yes
Power input	jack: 8-30 V DC, PoE in: 8-30 V DC	jack: 8-30 V DC, PoE in: 8-30 V DC
Power consumption	13 W	13 W
LEDs	8	8
Beeper	Yes	Yes
Operating system	MikroTik RouterOS, Level 4 license	MikroTik RouterOS, Level 4 license
Antenna gain	15 dbi	19 dbi
Frequency range	5.17 - 5.825 GHz	5.17 - 5.825 GHz
Polarization	Vertical and horizontal	Vertical and horizontal
3DB Beamwidth - azimuth	120 deg	120 deg
3DB Beamwidth - elevation	10 deg	5 deg
VSWR	1.43 typ, 1.8 max	1.43 typ, 1.8 max
Port to Port isolation	>40 dB min	>40 dB min
Front-to-Back ratio	>30 dB	>30 dB
Cross Polarization	>30 dB	>30 dB
Weight	Package: 1.35 Kg Unit: 816g	Package: 3.01 Kg Unit: 1,36 Kg
Dimensions	140 x 348 x 82 mm	152 x 598 x 78 mm
Suggested price	\$139	\$199

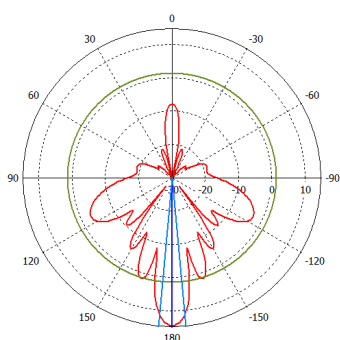
Wireless specifications

Device	mANTBox 15s / mANTBox 19s	
RATE	Tx (dBm)	Rx (dBm)
6MBit/s	31	-96
54MBit/s	27	-81
MCS0	30	-96
MCS7	27	-77
MCS9	22	-72

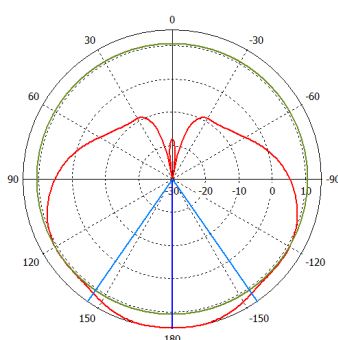
Antenna patterns



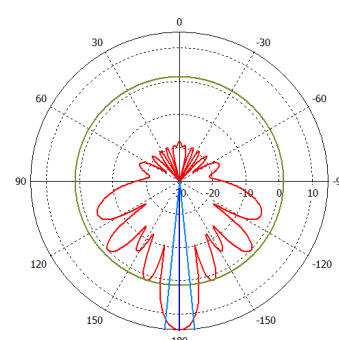
mANT15s HP azimuth



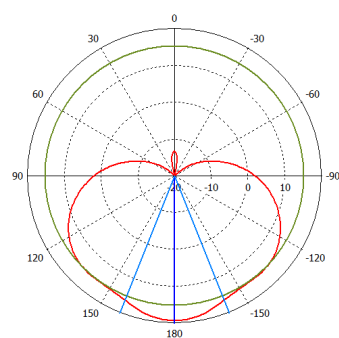
mANT15s HP elevation



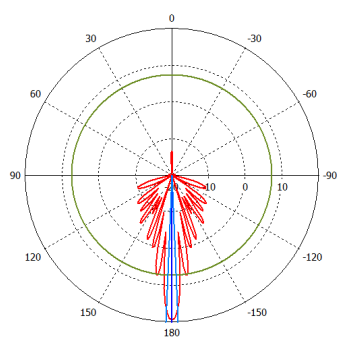
mANT15s VP azimuth



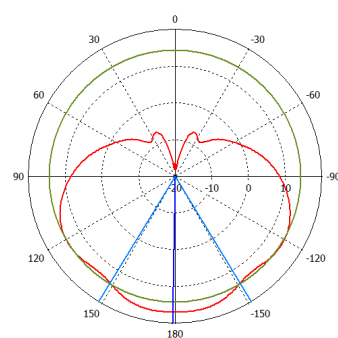
mANT15s VP elevation



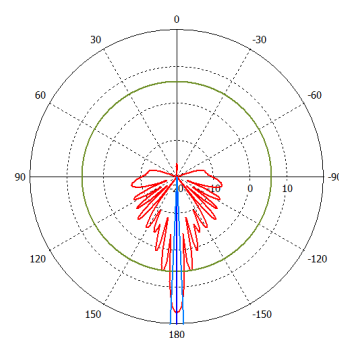
mANT19s HP azimuth



mANT19s HP elevation



mANT19s VP azimuth



mANT19s VP elevation